

How to measure for your LAH harness:

2020 R2 KB

We require specific measurements to make your harness, along with your dog's weight, breed and age. Your harness maker will use this information to make your harness customized for your dog. Please follow the instructions on the following pages and provide measurements when you place the order. The included diagrams, photos, and written descriptions will help you gather accurate information.

A helpful video may be found on our website at bld.pet/measuring.

Provide all measurements at the time of your order—you can call us, order online, or email us directly. Please note that delays in receiving complete & accurate order information will affect the turnaround time of your harness order, as we cannot start on the harness without these important details.

The harness specialists at BLD will review all of the details and will contact you if we have questions about your order or measurements. We may make recommendations based on the information you provide. Please accept our experience and suggestions for the most functional equipment options.

Don't panic, we're here to help! Really, don't worry—we'll be sure you get a perfect fit.

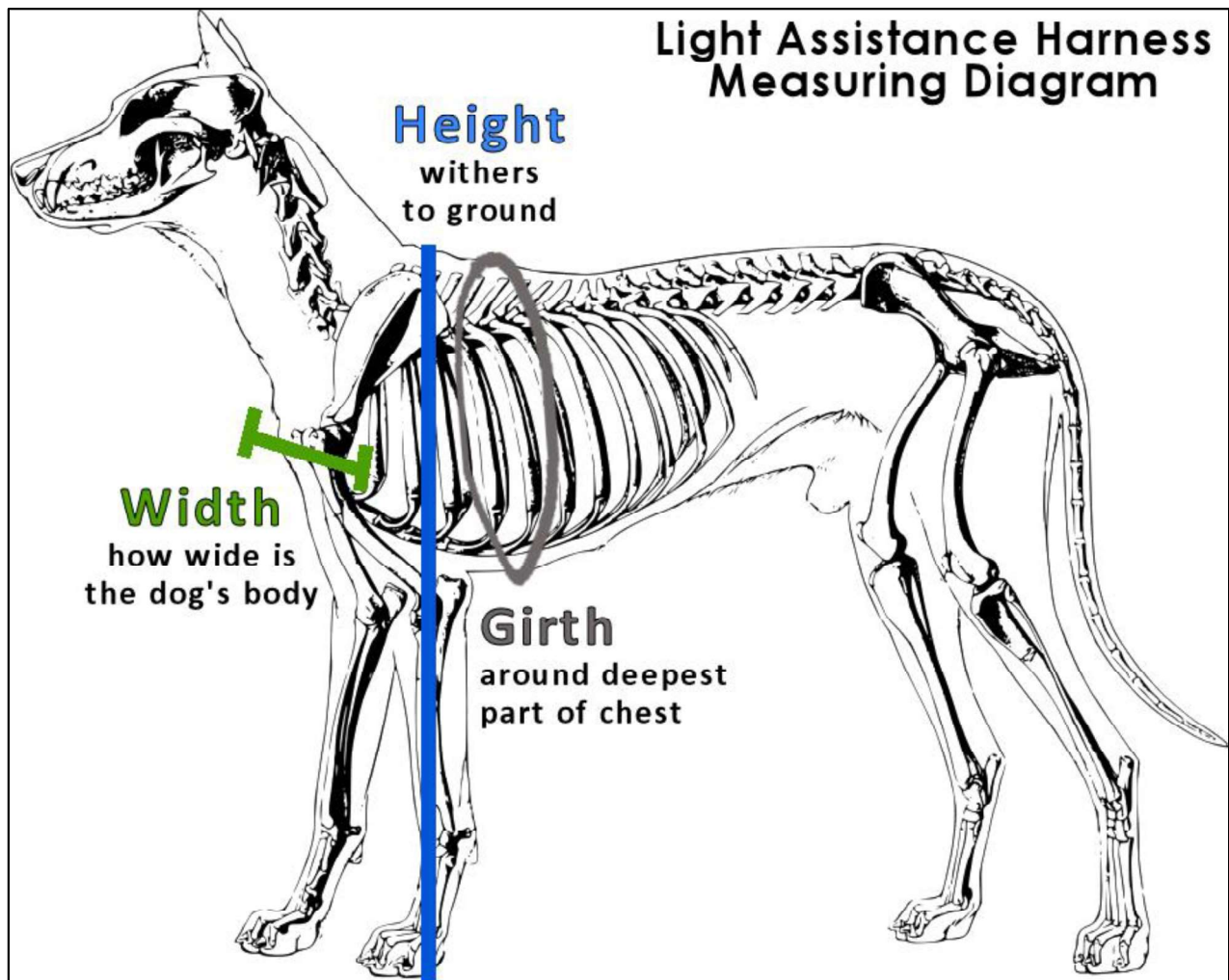
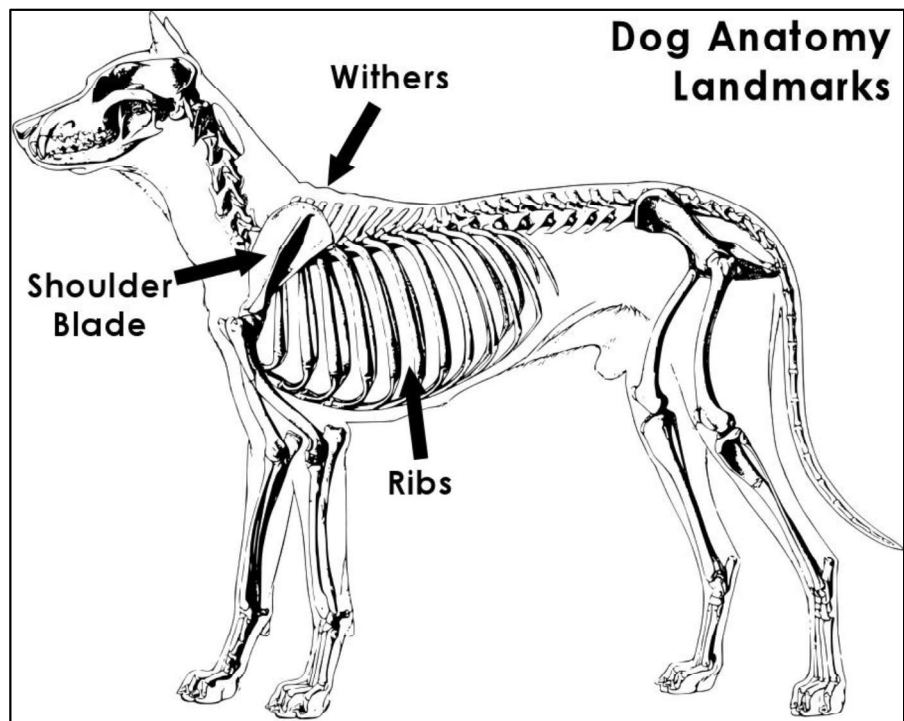
Tips & Hints

- Measure the dog according to the diagrams, photos and directions provided.
- There's a worksheet on the back page to keep track of the measurements and any questions remaining after reading this packet.
- The dog and user do NOT have to be together to measure for these harnesses.
- Measure the harness user to determine the correct handle height. It's very important the handle(s) fit the person; please don't guess the handle height.
- **Take each measurement 2 or 3 times for accuracy.** Each time may give you different results; this is normal, don't panic. Try again and average the numbers.
- **Measuring tools:** A cloth/tailor's measuring tape is ideal because it is flexible. If you don't have one, use a string for measuring around your dog's body and then measure the string against a measuring tape or yard stick. Use a flat ruler for the width.
- If your dog is nervous with a measuring tape, try using a leash around their body, then measure the leash separately.
- **You may want a friend to help you.**
No helper? **Smear something tasty on a paper plate and tape it to the wall** at the dog's eye level to keep him occupied while you measure him.
- For the dog's height and person's wrist/hand measurements, you can **tape a piece of paper to the wall** to mark the height. Then measure from that mark to the ground.



LAH Measuring Instructions

Watch a video: bld.pet/measuring



Measure the dog:

First, get out the very best treats you have, perhaps cheese, ham, or peanut butter! This is a great opportunity to have a helper bait your dog with a fistful of soft treats to keep your dog focused on trying to lick the food.

Have the dog stand square and balanced when taking all measurements. (No sitting or lying down.) Keep the measuring tape snug.

Start by finding your dog's withers. The withers are the top of the shoulder blades. The bones can be felt over the dog's legs and shoulders, just below the dog's neck.

1) Please provide Dog's name, breed, sex, age, and weight. This information helps us confirm the best sizing for your dog's harness.

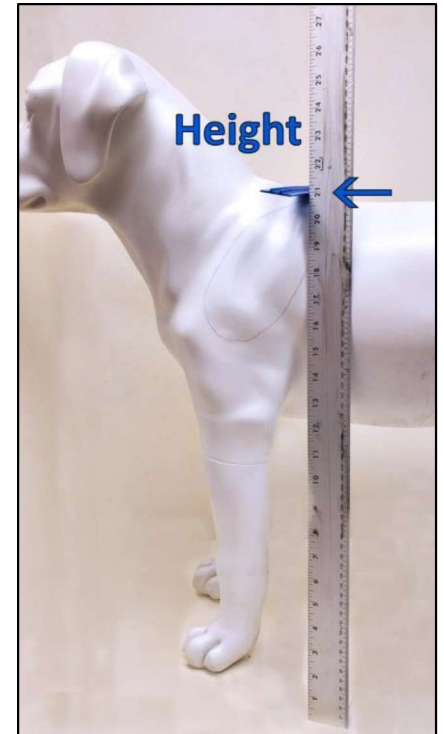
2) Height: while dog is standing, measure your dog's height. Height is measured from the withers (top of shoulder blades) to the ground. **BLUE LINE on diagram.** You might place a book across your dog's shoulders and measure from under the book straight down to the ground.

3) Girth: This measurement goes around your dog's ribs, behind the front legs, at the deepest part of his chest. Start the measuring just behind the withers, go down under the deepest part of the dog's ribs/chest, and back to the top. See the grey line on the diagram on p. 8

- The measuring tape should be mostly vertical, forming a complete circle around the dog's chest. **Measure snugly** but don't squish your dog. (With long haired dogs, be sure your measuring the dog's body, not just their floof!)

4) Width: how wide is the dog's body?

- There are two ways to measure the dog's width. Both are best with a regular flat ruler.
- This is an important measurement; the handle(s) will be made based on how wide your dog is, so take this measurement multiple times to find the average.
- **Bird's Eye View method:** This method works well with dogs that have heavy muscling in the shoulders and short coats. Stand directly above your dog, looking straight down over his body. If you touch one hand to each side of his ribs, how far apart are your hands?
- **Doorway method:** Have your dog squeeze through a doorway and stop when his shoulders are just past the doorjamb; **measure the width of the door opening at the dog's ribcage.** Be sure the door and doorjamb touch the dog. This works well with a sliding door, and a fistful of tasty treats.



Measure for the handle:

Now it's time to measure the person who will use the harness to determine the handle size. Measure the hand that will primarily be used on the harness (most dogs work on the person's left side, with left hand on the handle). Please take each measurement 2-3 times for accuracy.

Use the harness worksheet on the following page to calculate your handle height.

This is best done with a helper who can assure you're standing naturally and measure for you so you don't have to bend over.

No Helper? No problem! Tape a piece of paper to a wall. Stand with your shoulder touching the wall. Use a pencil to mark the paper at your **hand** and **wrist** heights as described below. Then, measure the wall from the ground to the marks.

Hand to ground:

1. **Stand while wearing normal shoes.**
2. Be sure you are balanced and comfortable. Are you standing up straight? No slouching! Relax your shoulders. Steady yourself with a cane if you need.
3. Hold a pencil in your hand (or similar object to represent a handle) **clutching it the way you wish to hold the harness handle.**
 1. **Allow your arm to relax.** Let your elbow relax naturally as you hold the pencil comfortably. (Don't bend or straighten your arm.)
 4. **Measure from the pencil to the floor.**
 5. Repeat! Move around, shake out your arm and measure a few times for accuracy.



Important Notes:

Dogs must be physically mature and of appropriate size, fitness and soundness for the work you would like them to perform.

Mobility, stability, and balance assistance work is physically demanding; a service dog must be in prime physical condition. **The dog's growth plates must be closed before beginning harness work** (recommended minimum of 18-24 months of age). Please allow your dog time to grow and mature. Dogs **MUST** be in our recommended weight/measurement range for the harness to fit and function properly.

Consulting a qualified veterinarian (orthopedic specialist or canine sports medicine physical therapist) is highly recommended for all service/assistance dogs that perform physical tasks. Fit and performance of the equipment can only be assured if the dog meets the minimum recommended standards, the user and trainer have reasonable expectations, and when the equipment is used responsibly for the purpose it was designed. Likewise, harness users should consult a physician and physical therapist to determine what medical equipment is appropriate for their mobility needs.

Our equipment is designed to allow an appropriately selected and trained service dog to reasonably assist a person with a balance, mobility impairment, or other disability that requires specialty service dog gear. BLD cannot assess a dog's suitability or appropriateness. **BLD harnesses are not intended to serve as, or to replace, a durable medical device such as a cane, walker, or crutch.** User assumes all responsibility for the safety, health, and care of the animal and human alike.

Light Assistance Harness with Standing Handle

by Bold Lead Designs, LLC

Call 303-856-3012

Email: orders@boldleaddesigns.com

Website: boldleaddesigns.com - [shop LAH](#)



My Harness Worksheet

Questions to ask BLD:

Leather color: select one

☐ Black (standard) ☐ Brown

Size: select one

☐ Small ☐ Medium ☐ Large ☐ XL

Standing Handle: select one

☐ Semi-Rigid ☐ Flex-Wire

Clip-On Handle: if desired, indicate length _____

☐ Flexible Leather (\$) ☐ Semi-Rigid (\$)

Girth Latch: select one

☐ Standard Quick-Release ☐ Magnetic (\$)

Reflector color: select one

☐ White (standard) ☐ Red ☐ Blue

Accessories or Notes:

Dog's Measurements

Dog's Name _____

Breed _____

Sex _____ Age* _____

Weight _____

1) Height _____

2) Girth _____

3) Width _____

Handle Measurement Worksheet:

Person's name: _____

Hand measurement: _____

Minus dog's height (#3): - _____

Handle height/length =

* Remember dog must be physically mature and sound.

2020 R2 KB