

LAH Measuring Instructions

Light Assistance Harness with Standing Handle



Table of Contents:

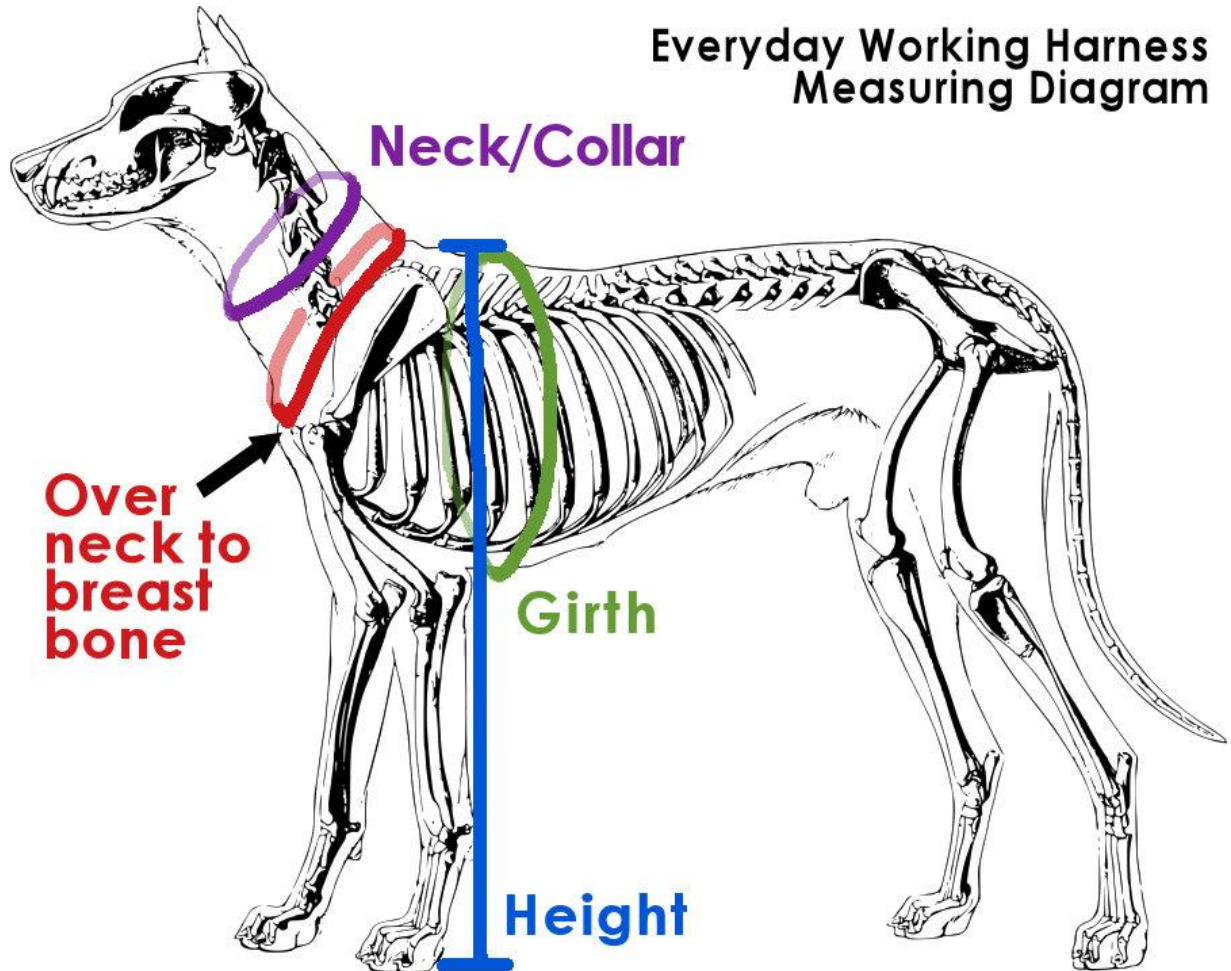
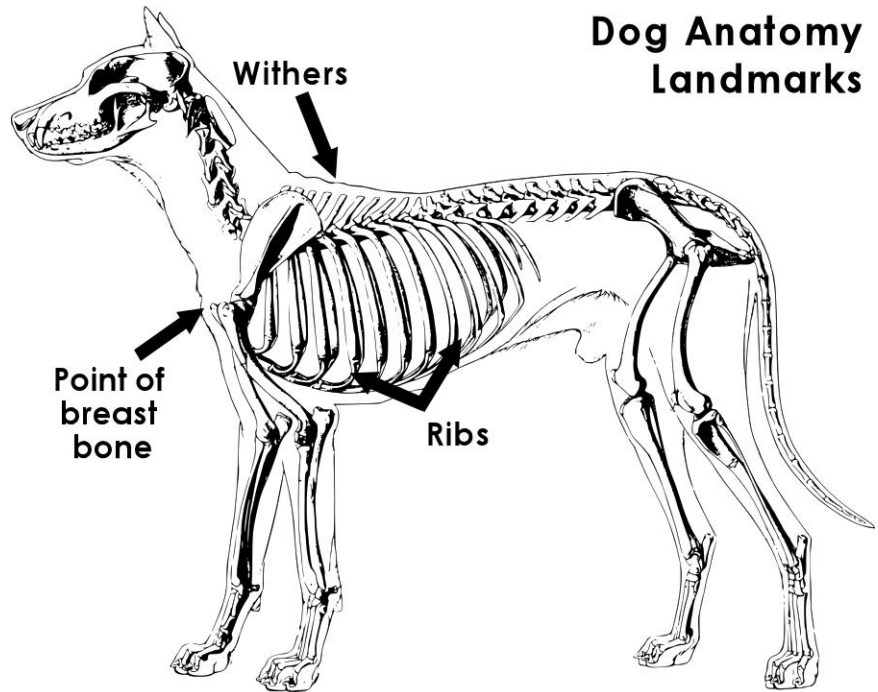
Measuring Diagram	p. 2
Tips & Hints	p. 3
Measuring the Dog	p. 3
Measuring for the Handle	p. 4
Worksheet	p. 5

Watch a video: <https://boldleaddesigns.com/measuring/>

This is the abridged document with measuring information only. Please refer to the complete information document for details, pricing, and options.

LAH Measuring Instructions

Watch a video: <https://boldleaddesigns.com/measuring/>



Tips & Hints for harness measuring. . .

- Read through the directions below!
- There's a worksheet on the back page for notes and recording your measurements.
- Use a cloth/tailor's measuring tape or a string for measuring around your dog's body.
- For accurate measurements, be sure your dog is standing! Keep the measuring tape snug.
- Have the dog stand square and balanced when taking all measurements.
- Measure the dog according to the **diagrams on page 2** for reference.
- You may want a friend to help you.
- The dog and user do NOT have to be together to measure!
- Measure the harness user to determine the correct handle height. Please don't guess the handle height, as is made to order for your harness. Please let us know if there are any special considerations we should note for your order.
- **Take each measurement 2 or 3 times for accuracy.** Each time may give you different results; this is normal -- don't panic. Just average the numbers.
- Provide all measurements at the time of your order—you may order online, call us, or email us directly. Please note that delays in receiving complete order information will delay your harness order, as we cannot start work on the harness without these important details.
- **The harness specialists at BLD will review all of the details and will contact you if we have questions about your order or measurements. We may make recommendations based on the measurements you provide. Please accept our experience and suggestions for the most functional equipment options.**
- Don't panic, we're here to help! Really, don't worry—the straps are adjustable and we'll be sure you get a perfect fit.

Measure the dog:

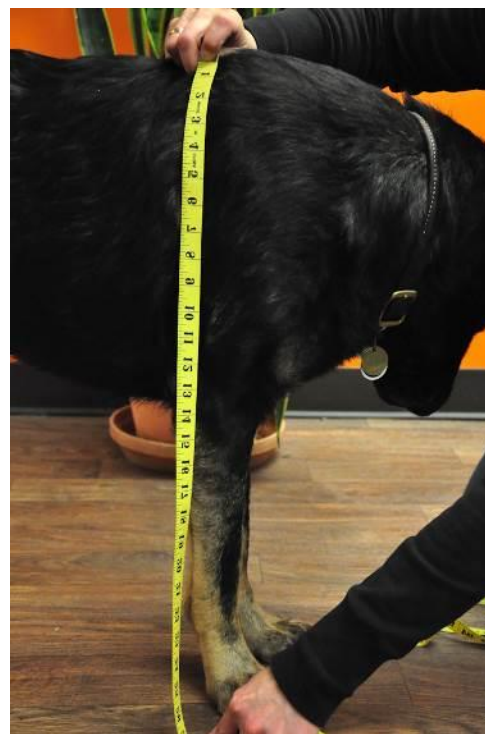
Please provide Dog's breed, weight, sex, and age

1) Neck/Collar: measure **snuggly** around middle of the dog's neck. **PURPLE LINE** on diagram.

2) Over neck to breastbone: locate the tip of your dog's breastbone—this is the prominent bone in the front of your dog's chest. Measure from the point of breastbone up over the neck, and back to the top of the breastbone. **Pull measuring tape snugly for accuracy.** Measuring tape must be tight. **RED LINE on diagram.**

3) Height: while dog is standing, measure from withers (top of shoulder blades) to the ground. **BLUE LINE on diagram.**

4) Girth: while dog is standing, measure behind the front legs, around the deepest part of the dog's ribs. **GREEN LINE on diagram.**



Measuring for the Standing Handle:

Measure the person who will use the harness, measuring the hand they will use on the harness, while standing in regular shoes.

Hand to ground:

1. **Stand while wearing normal shoes.**
2. Be sure you are balanced and comfortable. No slouching or exaggerated posture!
3. Hold a pencil in your hand (or similar object to represent a handle) the way you wish to hold the harness handle.
4. Allow your arm to relax, with elbow slightly bent.
5. **Measure from the pencil to the floor.**
6. Repeat! Move around, shake out your arm and measure a few times for accuracy.
7. Subtract the dog's height to determine Standing Handle measurement. (If the dog is taller than the person's hand, then we'll make a 2-3" handle.)

HINT! Tape a piece of paper to a wall. Stand with your shoulder touching the wall.

Use a pencil to mark the paper at the **hand** height. Then, measure the wall from the ground to the marks.

If you'd like a **Clip-On Handle**, you may indicate the desired length if you would like it longer or shorter than the standing handle. If unspecified, we will make the Clip-On Handle the SAME height/length as the Standing Handle.



We measure both LAH handle options from the dog's wither's to the user's hand grip.

Light Assistance Harness with Standing Handle

by Bold Lead Designs, LLC

Call 303-856-3012

Email: orders@boldleaddesigns.com

Website: boldleaddesigns.com



My Harness Worksheet

Questions to ask BLD:

Leather color: select one

Black (standard) Brown

Size: select one

Small Medium Large XL

Standing Handle: select one

Semi-Rigid Flex-Wire

Clip-On Handle: if desired, indicate length _____

Flexible Leather (\$) Semi-Rigid (\$)

Girth Latch: select one

Standard Quick-Release Magnetic (\$)

Reflector color: select one

White (standard) Red Blue

Accessories or Notes:

Dog's Measurements

Dog's Name _____

Breed _____

Sex _____ Age* _____

Weight _____

1) Collar _____

2) Breast bone _____

3) Height _____

4) Girth _____

Handle Measurement Worksheet:

Person's name: _____

Hand measurement: _____

Minus dog's height (#3): - _____

Handle height/length =

* Remember dog must be physically mature and sound.