

EWH Measuring Instructions

Everyday Working Harness

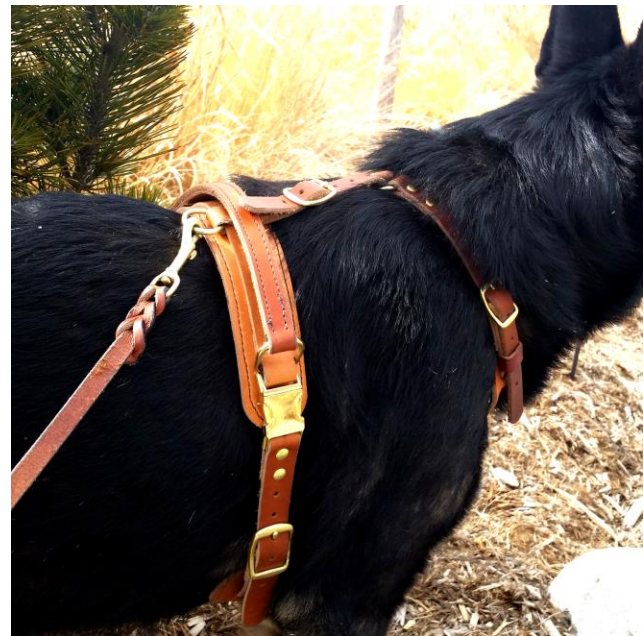


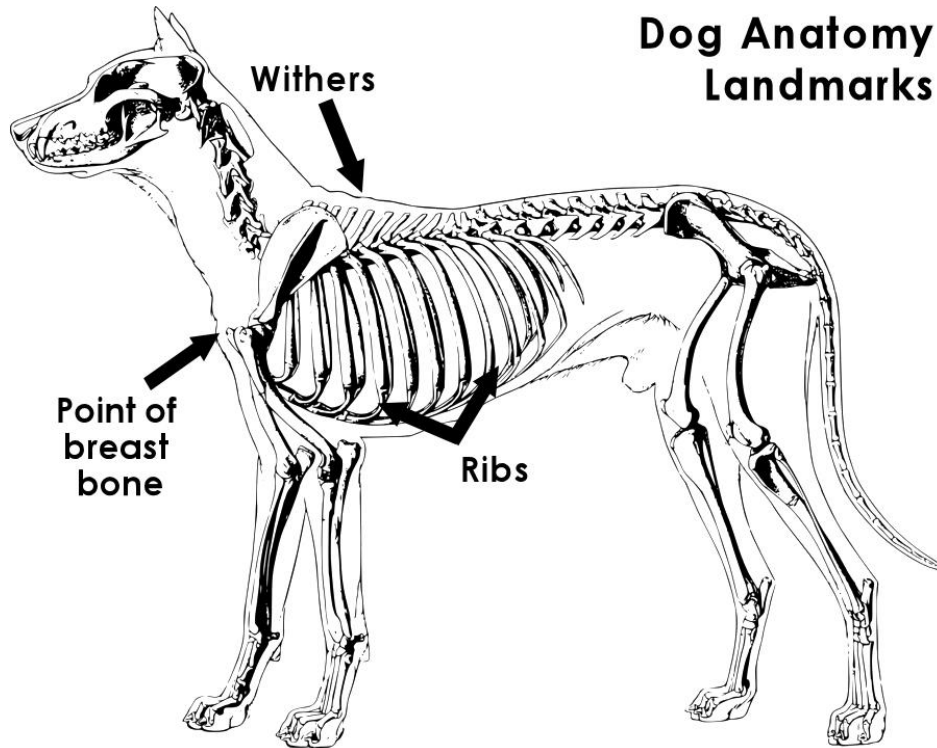
Table of Contents:

Measuring Diagram	p. 2
Tips & Hints	p. 3
Measuring the Dog	p. 3
Worksheet	p. 5

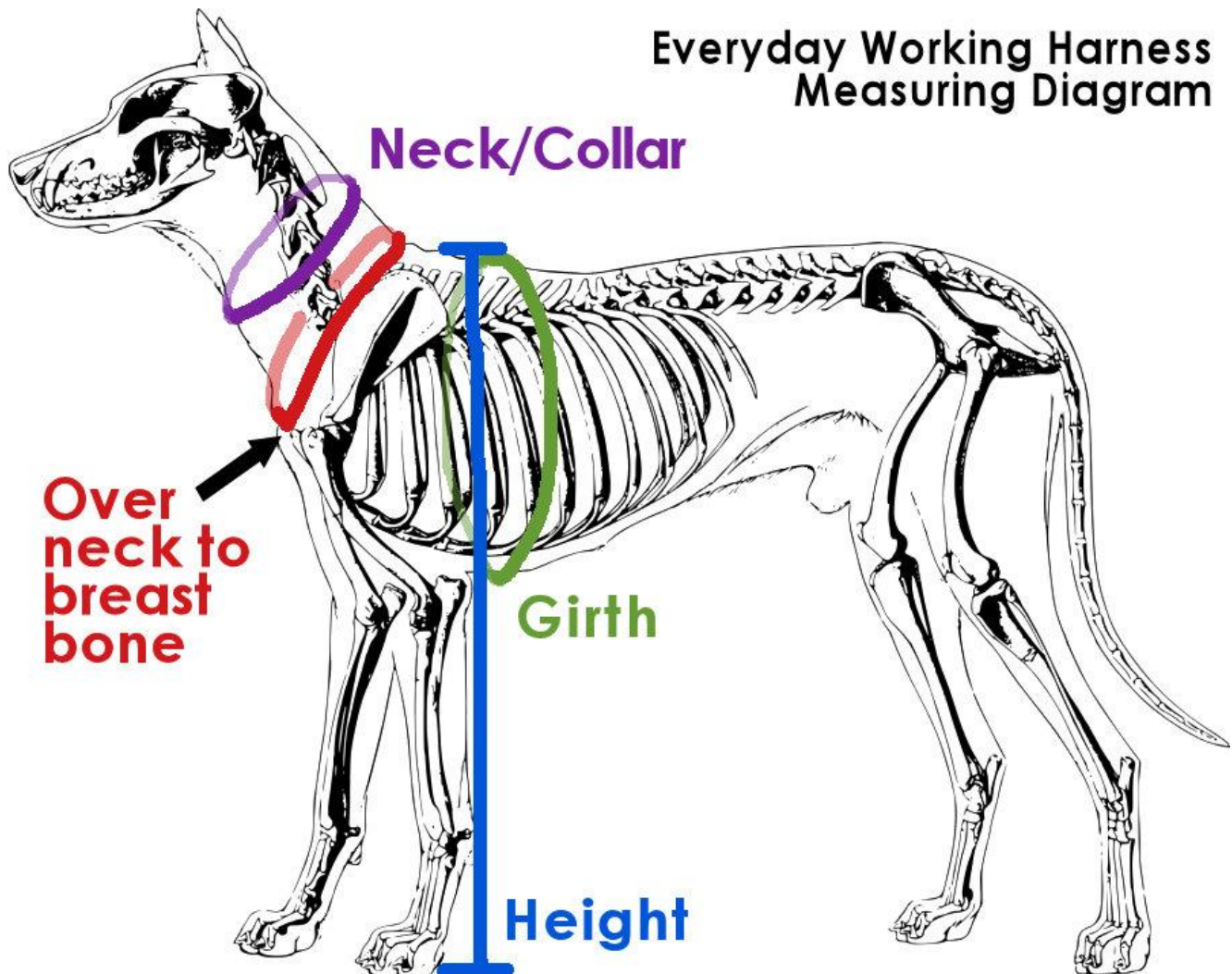
Watch a video: <https://boldleaddesigns.com/measuring/>

This is the abridged document with measuring information only. Please refer to the complete information document for details, pricing, and options.

Dog Anatomy Landmarks



Everyday Working Harness Measuring Diagram



Tips & Hints

- Read through the directions below! There's a worksheet on the back page for notes and recording your measurements.
- Use a cloth/tailor's measuring tape or a string for measuring around your dog's body.
- For accurate measurements, be sure your dog is standing! Keep the measuring tape snug.
- Have the dog stand square and balanced when taking all measurements.
- Measure the dog according to the **diagrams on page 2** for reference.
- You may want a friend to help you.
- The dog and user do NOT have to be together to measure!
- Measure the harness user to determine the correct handle height. Please don't guess the handle height, as is made to order for your harness. Please let us know if there are any special considerations we should note for your order.
- **Take each measurement 2 or 3 times for accuracy.** Each time may give you different results; this is normal -- don't panic. Just average the numbers.
- Provide all measurements at the time of your order—you may order online, call us, or email us directly. Please note that delays in receiving complete order information will delay your harness order, as we cannot start work on the harness without these important details.
- **The harness specialists at BLD will review all of the details and will contact you if we have questions about your order or measurements. We may make recommendations based on the measurements you provide. Please accept our experience and suggestions for the most functional equipment options.**
- Don't panic, we're here to help! Really, don't worry—the straps are adjustable and we'll be sure you get a perfect fit.

Measure the dog

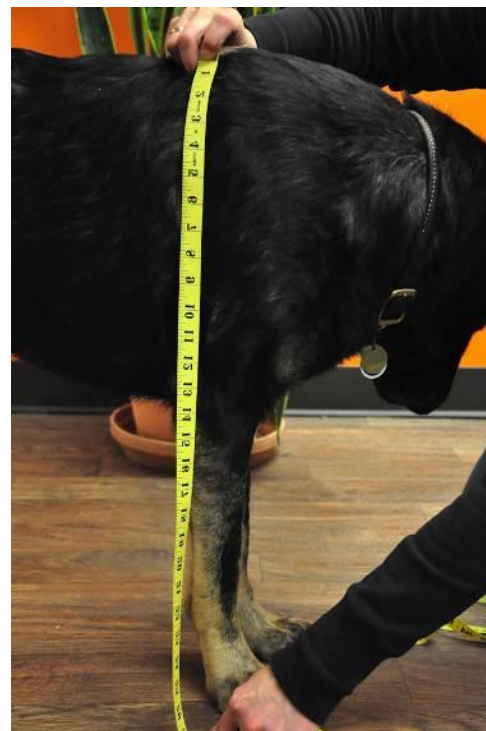
Please provide Dog's breed, weight, sex, and age

1) Neck/Collar: measure **snuggly** around middle of the dog's neck. **PURPLE LINE** on diagram.

2) Over neck to breastbone: locate the tip of your dog's breastbone—this is the prominent bone in the front of your dog's chest. Measure from the point of breastbone up over the neck, and back to the top of the breastbone. **Pull measuring tape snugly for accuracy.** Measuring tape must be tight. **RED LINE on diagram.**

3) Height: while dog is standing, measure from withers (top of shoulder blades) to the ground. **BLUE LINE on diagram.**

4) Girth: while dog is standing, measure behind the front legs, around the deepest part of the dog's ribs. **GREEN LINE on diagram.**



EWH

Everyday Working Harness

by Bold Lead Designs, LLC

Call 303-856-3012

Email: orders@boldleaddesigns.com

Website: boldleaddesigns.com



My Harness Worksheet

Questions to ask BLD:

Dog's Measurement worksheet:

Dog's Name _____

Breed _____

Sex _____ Age* _____

Weight _____

1) Collar _____

2) Breast bone _____

3) Height _____

4) Girth _____

Notes on what I'd like to order:

* Remember dogs must be physically mature and sound.

See important notes in the complete harness information document or on our website.